

Garlock Expansion Joint Style 204EPS

Extreme Pressure Service

Style 204 EPS (Extreme Pressure Service) is a fully customizable abrupt arched expansion joint for rigid piping systems. This expansion joint is to be used in applications where necessary rated pressures exceed those of the Garlock Style 204 & 204HP designs.



DESIGN

- » Tube
 - Wide selection of elastomers available which are resistant to temperatures, weathering, oxidation and chemicals
 - Abrupt arch configuration provides maximum movement, and pressure and vacuum resistance
- » Body
 - Composite fabric construction with welded, treated metal body rings for dimensional stability
- » Cover
 - Wide selection of elastomers available which are resistant to oxidation

OPTIONAL CONFIGURATIONS

- » Multiple Arch- For higher movements
- » Filled Arch- To eliminate media buildup
- » Oversized Arch- For higher movements
- » Concentric and Eccentric Tapers- To connect piping of unequal diameter
- » Custom Drilling- ANSI, DIN, AWWA, BS, JIS, and special drilling patterns available on request
- » Extended Face-to-face
- » Offsets, lateral, angular, and torsional

RETAINING RINGS

- » Required for all applications; provides metal surface to distribute bolt load evenly, preventing flange damage during bolt tightening
- » Standard material: mild steel with corrosion-resistant coating; galvanized or stainless steel also available

CONTROL UNITS/TIE RODS

- » Recommended on most applications to prevent damage due to excessive pipe movements
- » Standard material: mild steel, galvanized or stainless steel also available

METAL FLOW LINERS

- » Extends service life by providing protection from abrasive materials or solids, especially in high-velocity applications
- » Standard materials: stainless steel, other materials also available

SPECIAL LINER AND COVER MATERIALS

- » CSM
- » Nitrile
- » Natural Rubber
- » Fluoroelastomer
- » EPDM
- » Neoprene
- » FDA materials available
- » Chlorobutyl

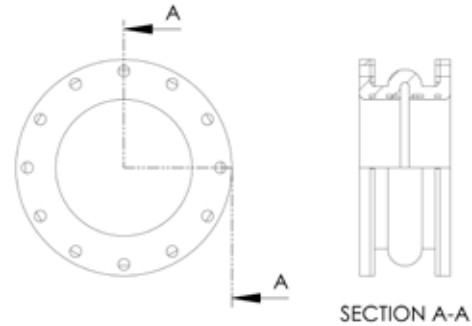
TEMPERATURE

- » Chlorobutyl/Polyester w/Natural Gum +180°F (82°C)
- » Standard Chlorobutyl/Polyester +250°F (+120°C)
- » Chlorobutyl/Fiberglass/Kevlar* +300°F (+150°C)
with EPDM tube and cover
- » Fluoroelastomer w/Fiberglass/Kevlar* +400°F (+205°C)

* Kevlar is a registered trademark of DuPont

TYPICAL INDUSTRIES

- » Marine - ABS witnessed hydrotesting available on request
- » Mining - Filled arch or extra thick tube configurations available
- » Power Generation/Nuclear - 10CFR50 Appendix B, 10CFR21 and NQA-1 basic

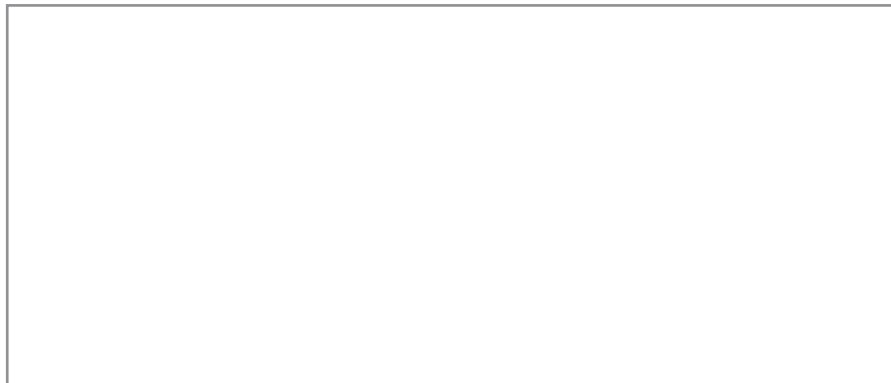


PRODUCT TABLE

Pipe Size I.D.		Movements					
		Compression		Lateral		Elongation	
inches	mm	inches	mm	inches	mm	inches	mm
1 - 1½	25 - 40	1/4	6	1/4	6	1/8	3
2 - 5	50 - 150	1/2	13	1/2	12	1/4	6
6 - 18	200 - 450	3/4	19	1/2	12	3/8	9
20 - 24	500 - 600	7/8	22	1/2	12	7/16	11
26 - 40	650 - 1000	1	25	1/2	12	1/2	12
42 - 120	1050 - 3000	1½	29	1/2	12	1/2	12

PRESSURE TABLE

Pipe Size I.D.		Pressure		Vacuum	
inches	mm	psi	bar	inch Hg	mm Hg
½ - 4	13 - 100	250	17.2	29.9	750
5 - 12	125 - 300	250	17.2	29.9	750
14	350	150	10.3	29.9	750
16 - 24	400 - 600	150	10.3	29.9	750
26 - 66	650 - 1,650	100	6.9	29.9	750
68 - 96	1,700 - 2,400	100	6.9	29.9	750
98 - 108	2,400 - 2,700	80	5.5	29.9	750
110 - 120	2,750 - 3,000	80	5.5	29.9	750



EJ 9:27

GARLOCK

an *EnPro* Industries family of companies

Tel: 1-877-GARLOCK / 315.597.4811

Fax: 800.543.0598 / 315.597.3216

www.garlock.com

Garlock Sealing Technologies

Garlock Rubber Technologies

GPT

Garlock PTY

Garlock do Brasil

Garlock de Canada, LTD

Garlock China

Garlock Singapore

Garlock Germany

Garlock India Private Limited

Garlock de Mexico, S.A. De C.V.

Garlock New Zealand

Garlock Great Britain Limited

Garlock Middle East